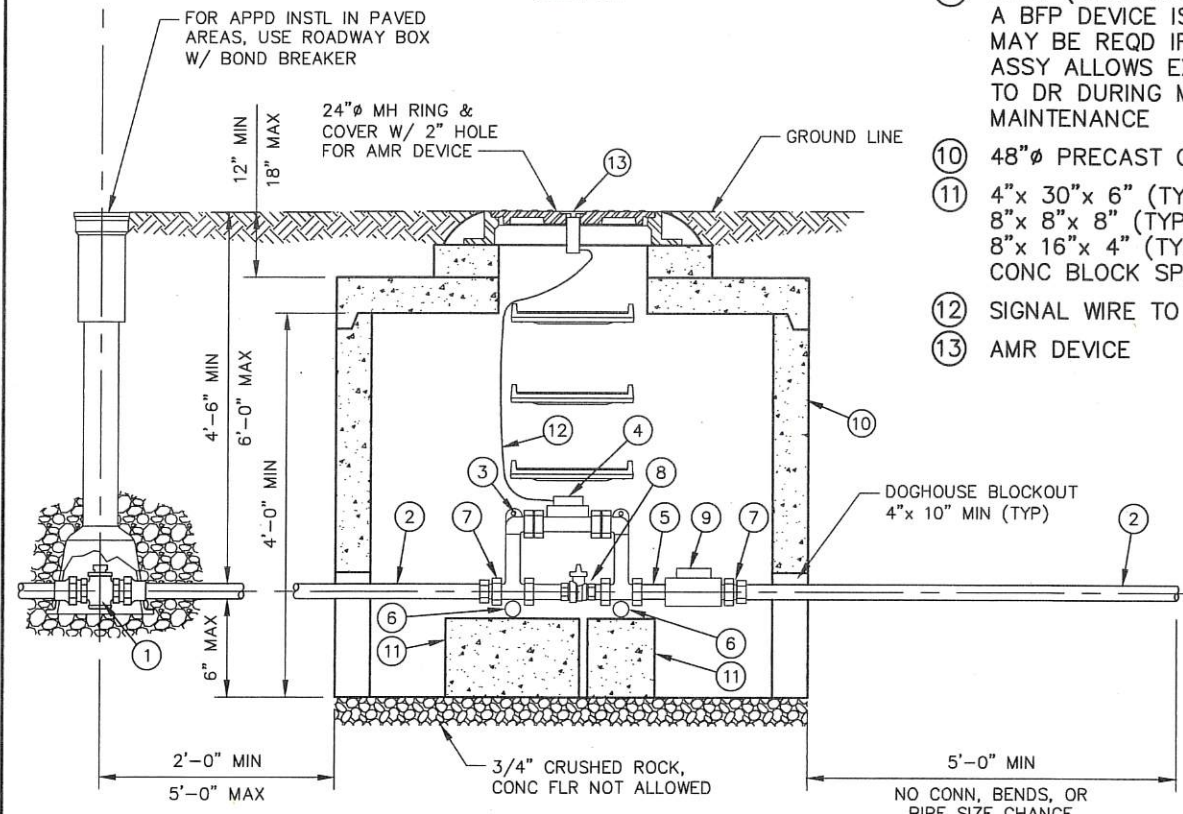


PLAN



ELEVATION

KEYED NOTES:

- ① CURB STOP
- ② TYPE "K" Cu TUBING
- ③ 1 1/2" OR 2" COPPERSETTER/ METER YOKE W/ BYPASS
- ④ WTR METER W/ ENCODER REGISTER
- ⑤ 3" NIPPLE BTWN COPPERSETTER & CHKV
- ⑥ 1"x 23" BSP-40
- ⑦ IRON PIPE TO FLARE CPLG FROM INLET SIDE OF COPPERSETTER & OUTLET SIDE OF CHKV
- ⑧ BYPASS W/ VLV WILL BE 1" FOR 1 1/2" COPPERSETTERS & 1 1/2" OR 1 1/4" FOR 2" COPPERSETTERS; NO BYPASS FOR IRR METERS
- ⑨ CHKV (CHKV NOT REQD WHERE A BFP DEVICE IS INSTL) CHKV MAY BE REQD IF DIST TO BFP ASSY ALLOWS EXCESSIVE WTR TO DR DURING METER MAINTENANCE
- ⑩ 48"Ø PRECAST CONC MH
- ⑪ 4"x 30"x 6" (TYP OF 2) OR 8"x 8"x 8" (TYP OF 4) OR 8"x 16"x 4" (TYP OF 4) CONC BLOCK SPRT
- ⑫ SIGNAL WIRE TO AMR DEVICE
- ⑬ AMR DEVICE

NOTES:

1. CURB STOP SHALL BE 2 FEET MINIMUM FROM THE INLET SIDE OF THE METER MANHOLE.
2. THE COPPERSETTER OR METER YOKE SHALL BE 12 INCH HIGH MAXIMUM.
3. GROUT DOGHOUSE BLOCKOUTS AFTER SERVICE LINE INSTALLATION.
4. INSTALL METER MANHOLE AND SERVICE LINE IN ACCORDANCE WITH SPECIFICATION SECTION 33 19 13.

DRAWN BY: BAIREZ
 CHKD BY: K ROSS/ *KR*
 APPD BY: *[Signature]*
 ORIGINATION DATE: JULY 2021
 REVISION DATE: AUGUST 2022

33270
OUTSIDE SETTING FOR
1 1/2" & 2" METER W/ CHECK
VALVE & BYPASS IN MANHOLE

D DENVER WATER
 1600 West 12th Ave
 Denver, Colorado 80204-3412
 T: 303.628.6000
 F: 303.628.6199
 denverwater.org