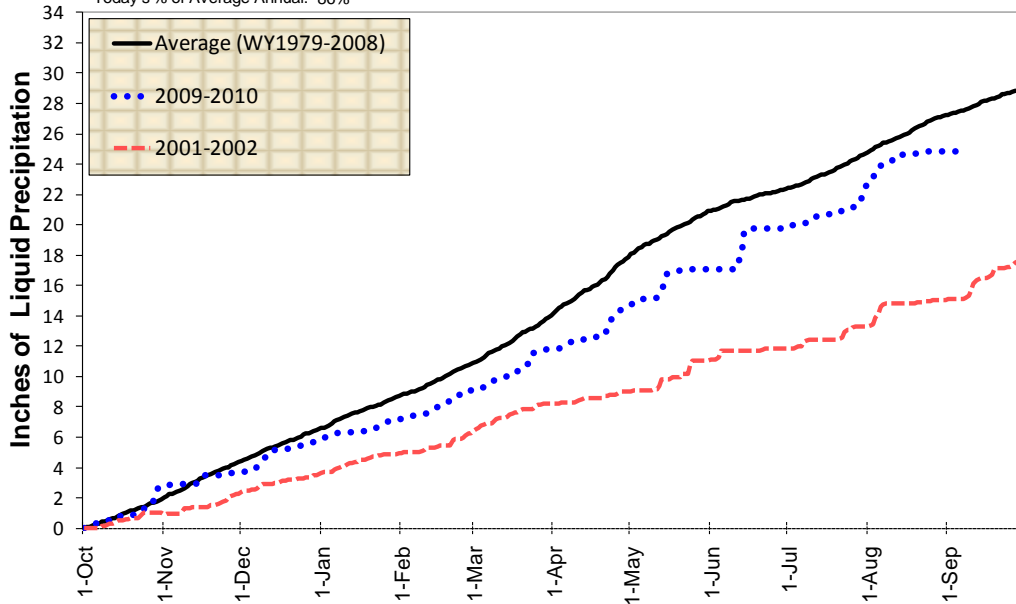


## Cumulative Precipitation - South Platte Watershed

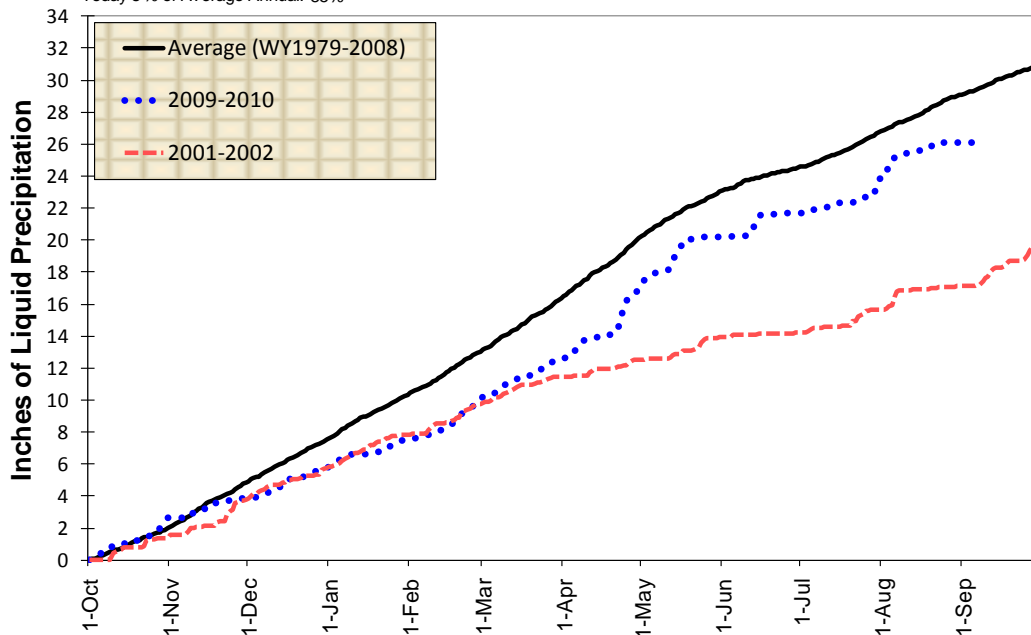
Date: 9/7/2010  
 Today's Cumulative Precipitation: 24.9  
 Average Cumulative Precipitation for Date: 27.5  
 Today's % of Average: 90%  
 Today's % of Average Annual: 86%



Data represented is from the 7 Snotel stations above Denver Water's Upper South Platte diversion facilities.

## Cumulative Precipitation - Colorado River Watershed

Date: 9/7/2010  
 Today's Cumulative Precipitation: 26.1  
 Average Cumulative Precipitation for Date: 29.4  
 Today's % of Average: 89%  
 Today's % of Average Annual: 85%



Data represented is from the 8 Snotel stations above Denver Water's Upper Colorado diversion facilities.