



WATER WATCH REPORT

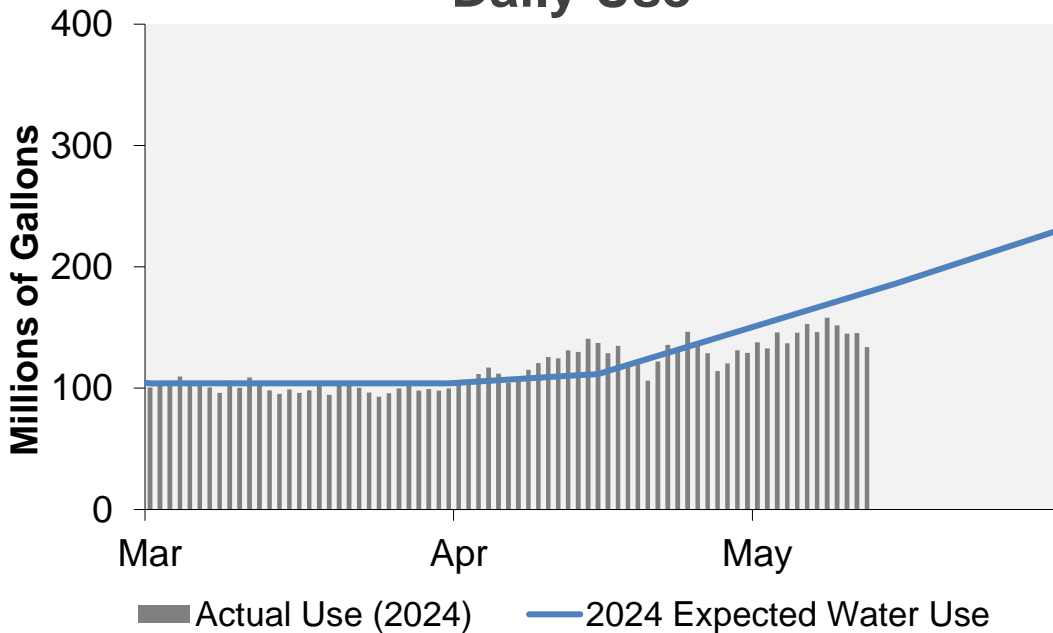
May 13, 2024

Supply Reservoir Contents

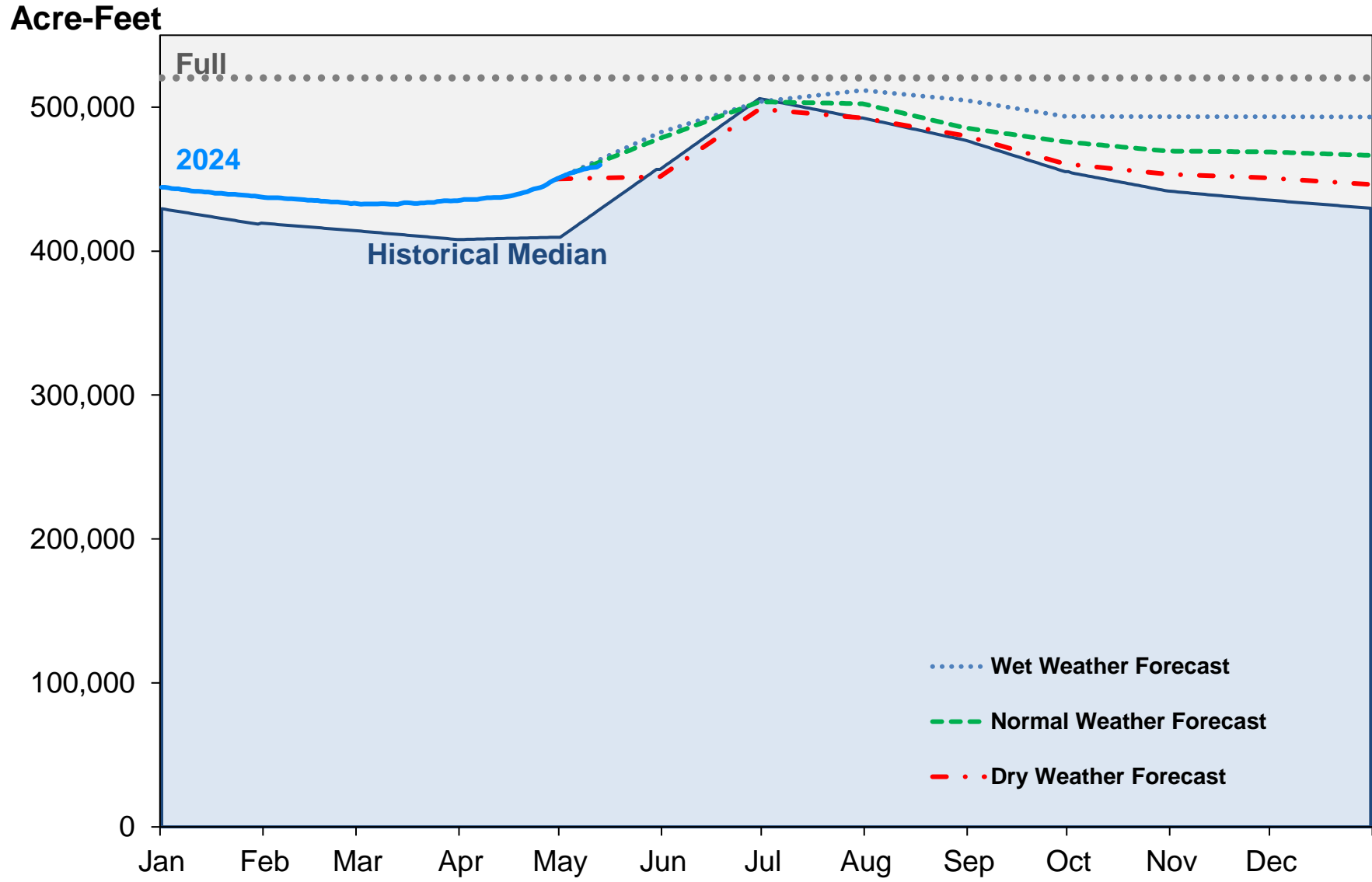
Reservoir	Capacity		Current Usable Contents (acre-feet)	Percent Full		
	(acre-feet)			Current	Last Year	Historical Median
	Total	Usable				
Antero	20,122	20,067	20,152	100%	101%	99%
Eleven Mile	97,779	97,779	100,140	102%	102%	102%
Cheesman	79,064	79,064	78,263	99%	88%	91%
Marston	19,108	13,133	9,098	69%	65%	74%
Strontia Springs	7,863	7,163	6,719	94%	88%	94%
Chatfield	28,709	12,415	12,388	100%	100%	93%
Dillon	257,304	249,095	217,278	87%	80%	89%
Gross*	41,811	29,811	10,480	35%	26%	38%
Ralston	10,776	7,276	5,337	73%	63%	75%
Meadow Creek	5,370	4,520	-	0%	19%	23%
Total	567,906	520,323	459,855	88%	83%	83%

*Gross Reservoir storage is limited to 29,938 acre feet in total storage during construction activities. The percent full figures are based on the normal usable capacity of 29,811 acre feet.

Daily Use



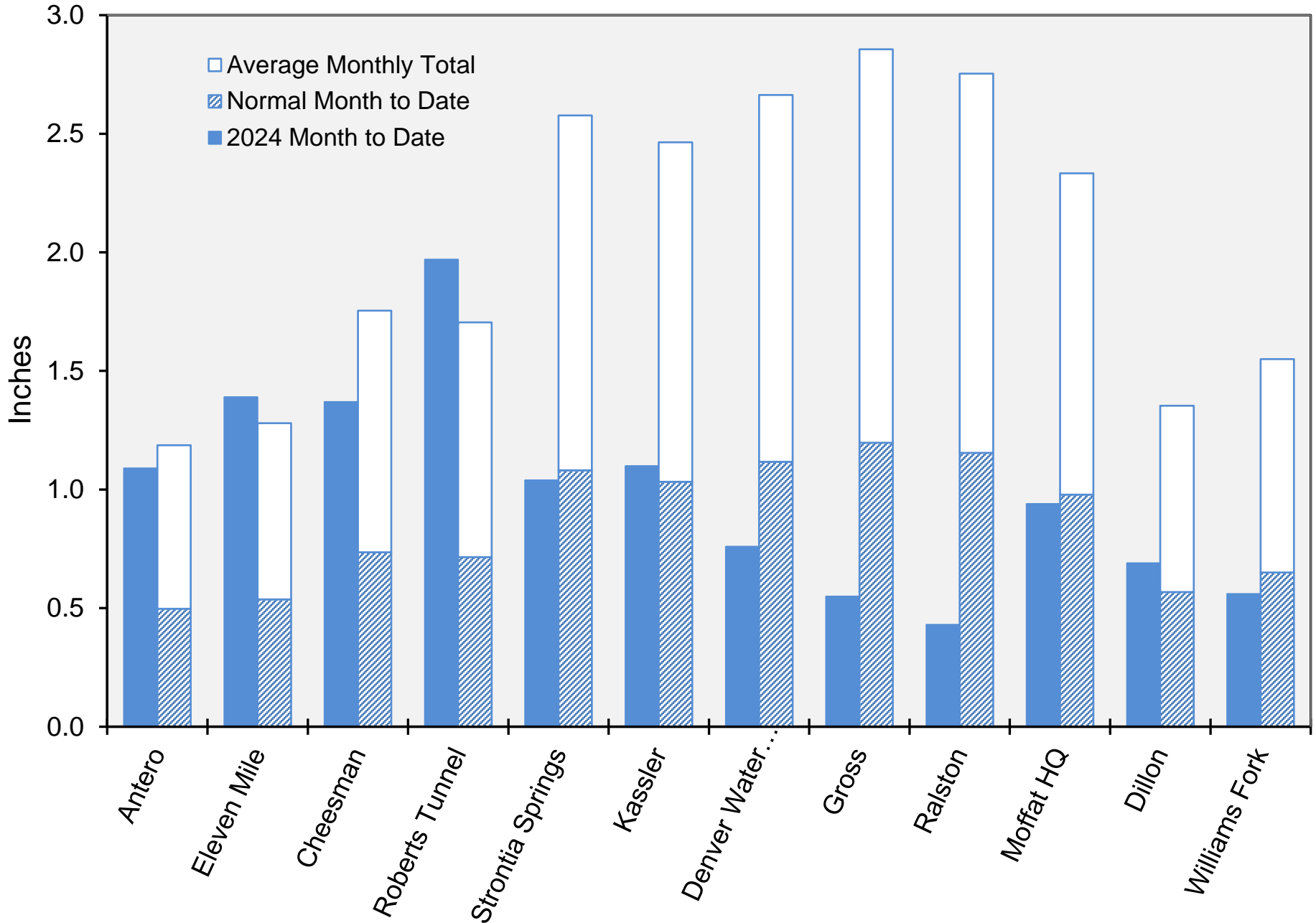
Supply Reservoir Contents



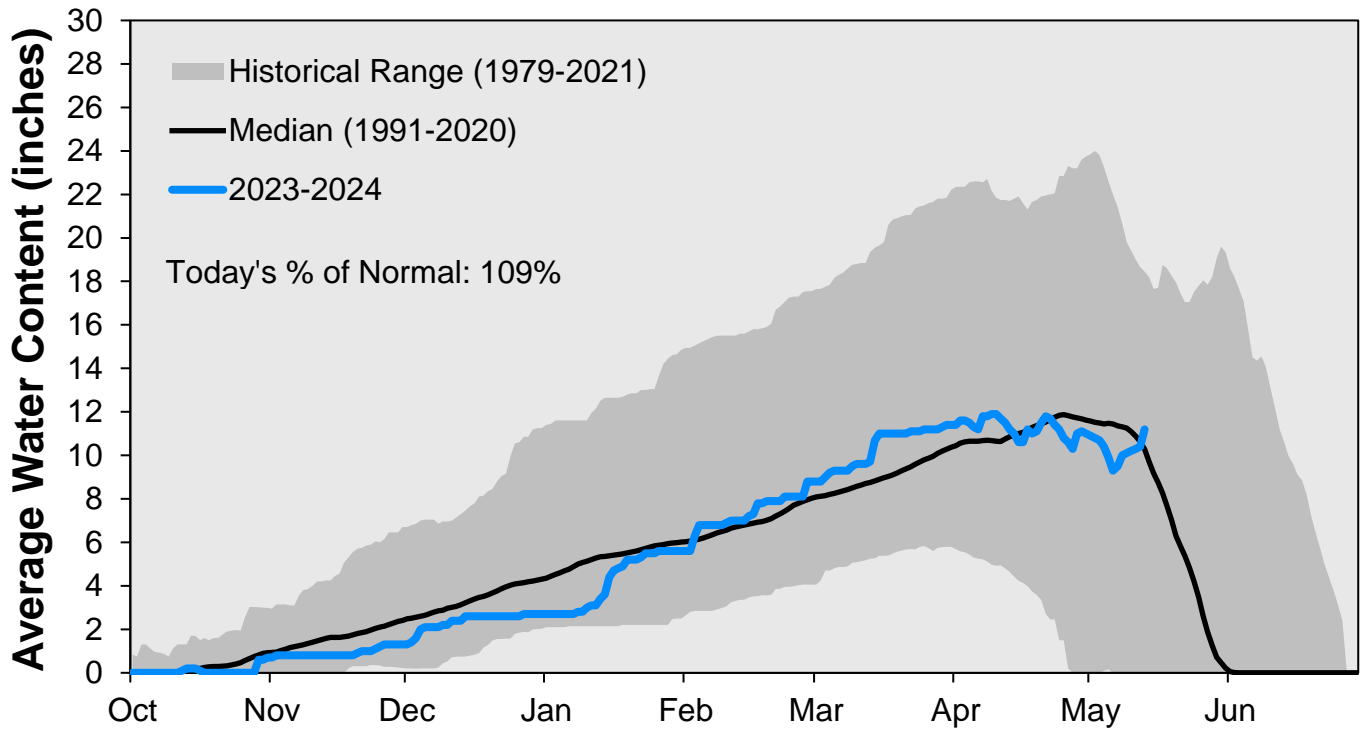
Note: Denver Water forecasts seasonal reservoir storage contents under dry future weather, normal future weather and wet future weather scenarios.

Gross Reservoir storage is limited to 29,938 acre feet in total storage during construction activities. The percent full figures are based on the normal usable capacity of 29,811 acre feet.

May Precipitation

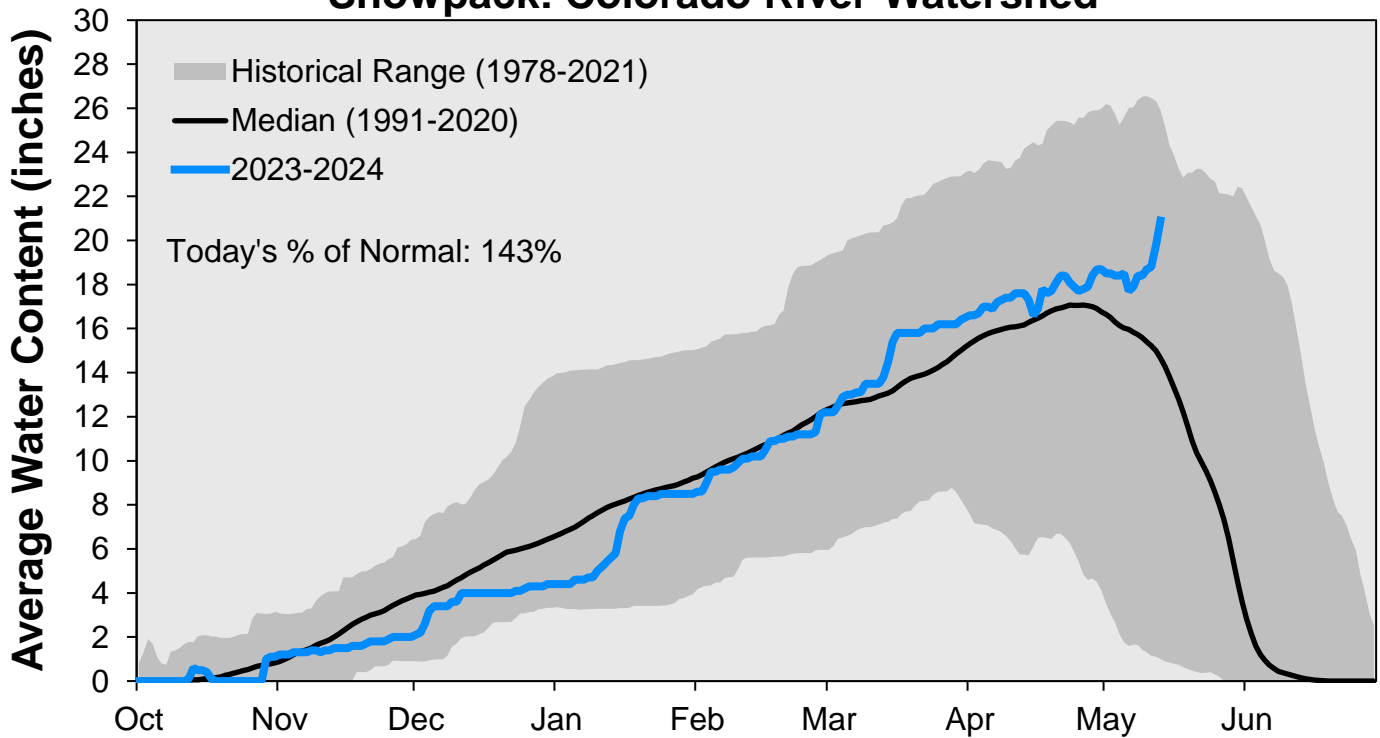


Snowpack: South Platte River Watershed



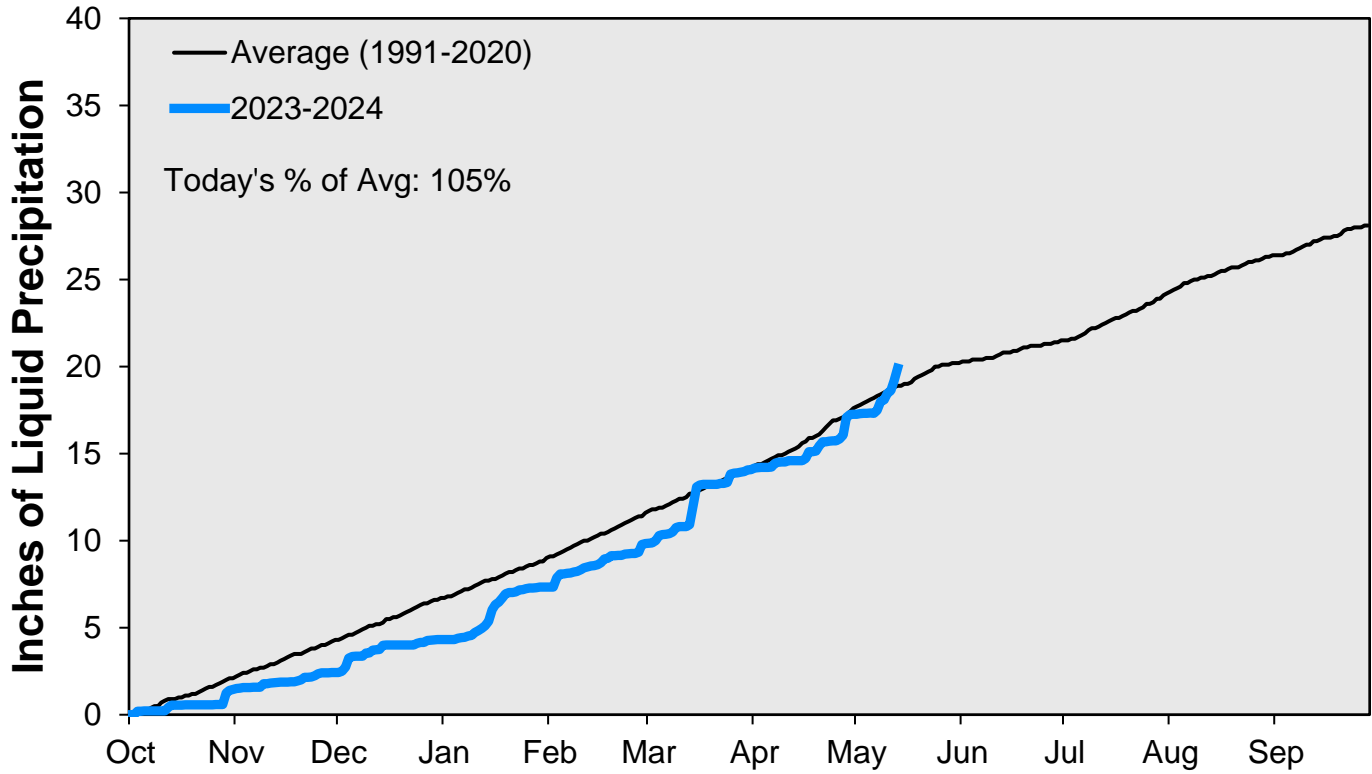
Data are from the 7 SNOTEL stations above Denver Water's Upper South Platte diversion facilities.

Snowpack: Colorado River Watershed

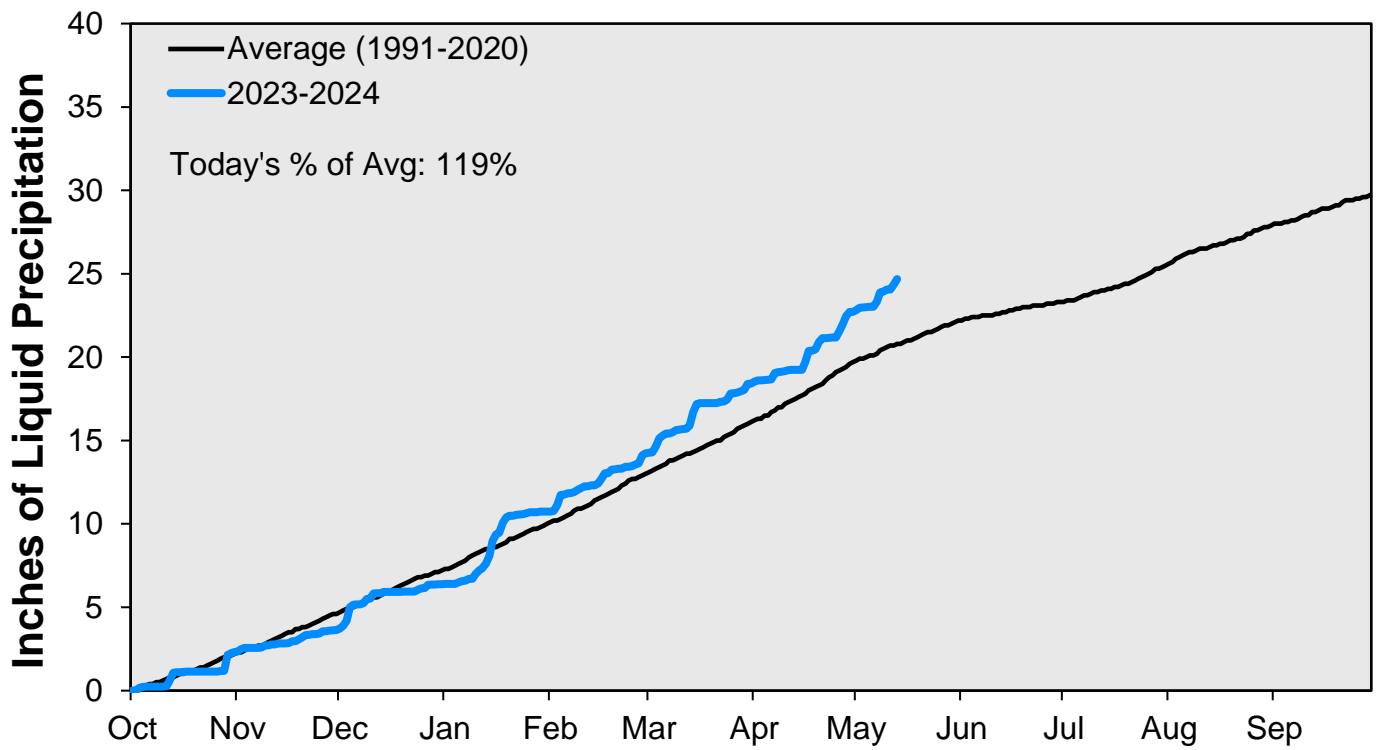


Data are from the 9 SNOTEL stations above Denver Water's Upper Colorado diversion facilities.

Cumulative Precipitation: South Platte River

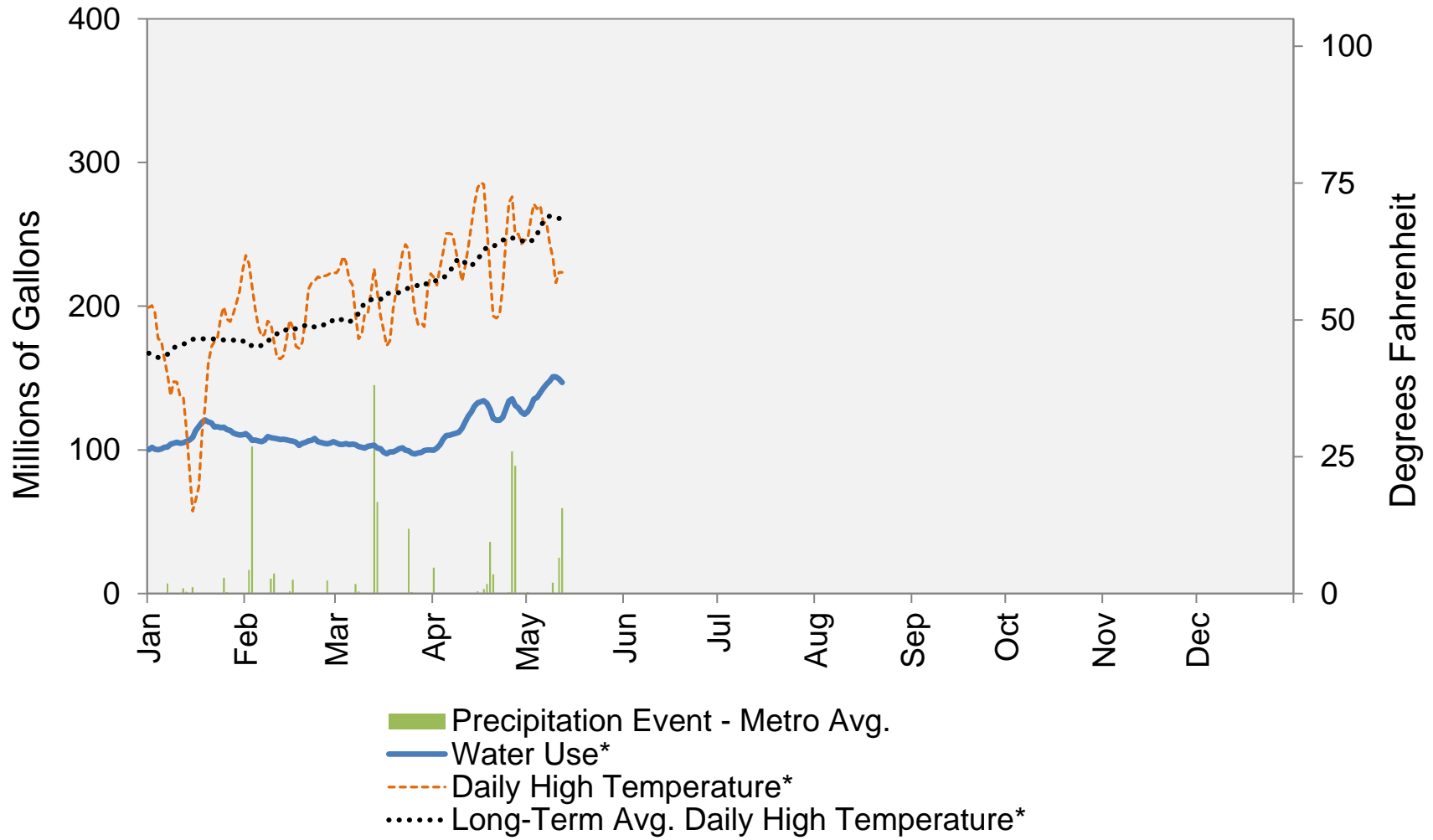


Cumulative Precipitation: Colorado River



Data are from the 7 SNOTEL stations above Denver Water's Upper Colorado diversion facilities.

2024 Water Use and Weather Conditions



* Rolling 5-Day Avg.

May 13, 2024

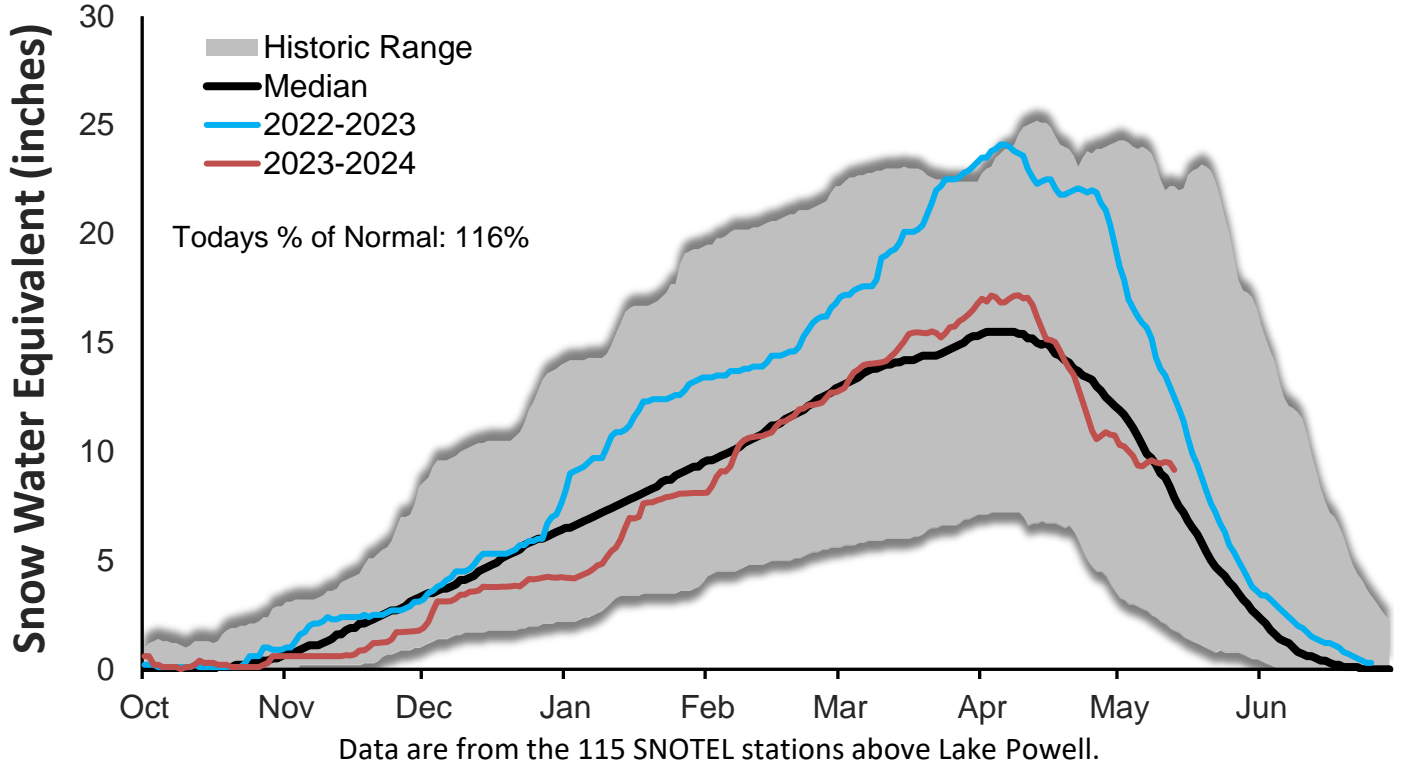
Denver Water Use and Reservoir Contents 2024

	Jan	Feb	Mar	Apr	May	Jun	Jul	Aug	Sep	Oct	Nov	Dec	YTD-Avg
Predicted End-of-Month Supply Reservoir Contents (Full = 520,323 AF)	478,300												
Actual End-of-Month Supply Reservoir Contents (AF)	437,644	433,227	435,044	450,216									
Actual % Full	84%	84%	84%	87%									
Historical Median % Full	81%	80%	79%	79%	88%	98%	95%	92%	88%	85%	84%	83%	
2024 Expected Daily Use (MG)	105	105	104	120	190	267	312	304	277	170	111	105	116
Actual Daily Use (MG)	1	97	111	101	103	138							
	2	105	104	103	106	133							
	3	93	95	102	112	146							
	4	103	112	110	117	137							
	5	105	109	103	112	146							
	6	102	108	103	104	153							
	7	107	109	101	109	146							
	8	103	108	96	115	158							
	9	106	108	106	121	152							
	D 10	109	108	100	126	145							
	A 11	98	106	109	125	145							
	Y 12	109	106	103	131	134							
	13	107	109	98	130								
	O 14	110	106	95	141								
	F 15	119	105	99	137								
	16	121	104	96	129								
	M 17	124	102	98	135								
	O 18	122	98	105	120								
	N 19	117	113	95	120								
	T 20	113	109	104	106								
	H 21	118	110	103	122								
	22	110	104	100	136								
	23	123	104	97	130								
	24	113	102	93	146								
	25	114	105	96	136								
	26	110	108	100	129								
	27	108	103	104	114								
	28	113	107	98	120								
	29	109	106	99	131								
	30	111		98	129								
	31	112		100									
Monthly Average	110	106	100	123	144								113
% of 2023 Expected Daily Use	105%	101%	97%	103%	76%								98%

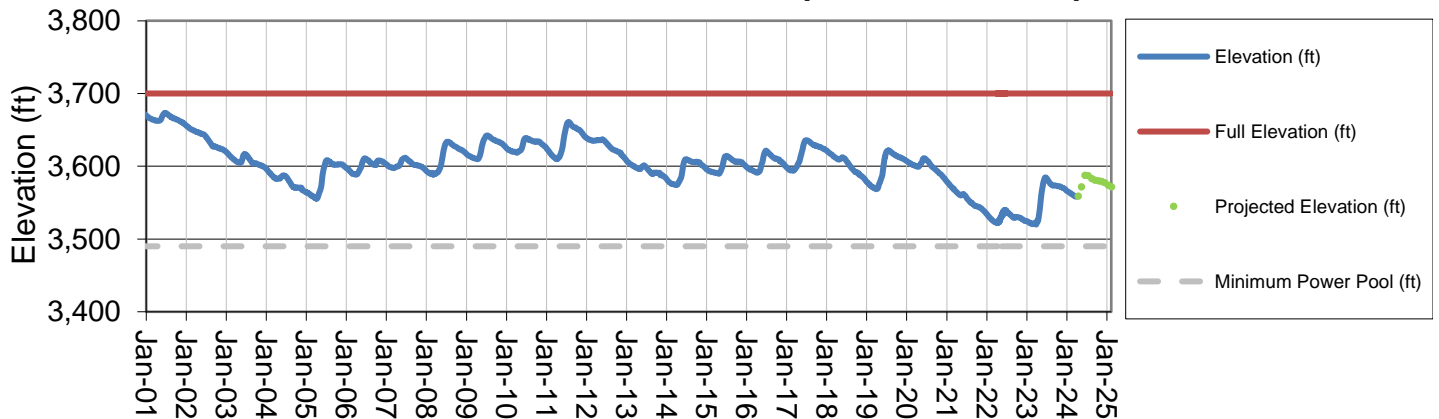
Notes: 1) "AF" denotes acre-feet. "MG" denotes million gallons. 2) Expected Daily Use is based on historical use with normal weather conditions. 3) The predicted end-of-month supply reservoir contents figures assume normal weather after May 6th, 2024. 4) The differences between predicted and actual end-of-month supply reservoir contents are the result of normal estimation error of daily use, supply, evaporation, carriage losses and raw water deliveries. 5) Predicted supply reservoir contents last updated on May 6th, 2024. 6) Daily water figures are subject to change.

Lake Powell Report*

Colorado River Above Lake Powell Snowpack



Lake Powell Elevation (2001-Current)



* Denver Water gets half of its water supply from the Colorado River and closely monitors conditions at Lake Powell and within the greater Colorado River Basin.